



# Redco International

ISO 9001:2008 | 14001:2004 | OHSAS 18001:2007

## COMPANY PROFILE



Civil Construction | Precast Concrete & Hollow core Factories | Readymix Concrete Plants | Earthwork & Blasting  
MEP Grade A, Kahramaa approved EPC contractor | Steel Cut & Bend Factory | Architectural Finishes | Textiles

## BRIEF INTRODUCTION

**Redco International** is a leading industrial manufacturing and contracting group operating in Qatar since 1982. The company is owned by H.E. Sheikh Jassim bin Hamad Al Thani and Ex-Senator, Saif ur Rehman Khan. Redco International has been a leader in precast concrete manufacturing and erection in Qatar since the 1980s, and is also amongst the leaders in ready-mix concrete manufacturing, steel cut & bend, Mechanical-Electrical-Plumbing (MEP) and building works (general contracting).

**Redco International** employs 14000 people in Qatar, including more than 400 qualified civil, electrical and mechanical engineers. The company also has two sister companies in Pakistan: Redco Pakistan Limited (RPL) and Redco Textiles Limited (RTL), which employ more than 3000 people. **Redco Textiles Limited is a vertically integrated, ISO 9001 certified textiles manufacturing company which has spinning and weaving units as well as a captive power plant.** Furthermore, the group has also recently constructed a 1320 MW power plant at Port Qasim, Karachi, Pakistan.

In Qatar, **Redco International** is a well-known brand with a large collection of assets and projects that are visible across the country. The company owns more than 1000 units of construction equipment, which includes a large fleet of dumpers, trailers, ready-mix trucks, concrete pumps, excavators, bulldozers, wheel loaders, tower cranes, crawler cranes, mobile cranes, specialist precast/ steel cut & bend/ MEP equipment, and also a very large number of transport vehicles, including buses, cars and pick-ups for the company's 14000 employees.

**Redco International** currently has projects in hand worth QR. 6.0 billion. The company has an ISO 9001 certified quality management system and is licensed as a Grade-A civil and electro-mechanical contractor with all major government departments.

**Redco International's** strategic business interests and activities profile in Qatar and Pakistan include:

- Precast Concrete & Hollow core Plants – Design, Manufacturing & Erection
- Readymix Concrete Plants – Design, Manufacturing & Placing
- Earthworks & Blasting – Contractor, MOI approved blasting company
- General Contractor – EPC contractor, grade A
- Mechanical, Electrical, Plumbing (MEP) – grade A, Kahramaa approved
- Steel cut & bend Factory – Design, Manufacturing & Installation
- Textile – Weaving & Spinning Mills

**Redco International** is a conscientious contractor with an excellent Health and Safety record. The company has been given numerous Health and Safety awards by clients. The company has worked at prestigious projects for millions of man-hours without a single Lost Time Incident (LTI).



## CIVIL CONSTRUCTION



QATAR RAIL RED LINE ELEVATED PROJECT

## PRECAST CONCRETE & HOLLOW CORE FACTORIES



REDCO PRECAST FACTORY AT MESAIEED



## PRECAST CONCRETE & HOLLOW CORE FACTORIES



REDCO PRECAST FACTORY AT NOH-2



REDCO PRECAST FACTORY AT NOH-2



## PRECAST CONCRETE & HOLLOW CORE FACTORIES



REDCO PRECAST FACTORY AT NOH-2



REDCO PRECAST FACTORY AT NOH-2



## PRECAST CONCRETE & HOLLOW CORE FACTORIES



REDCO PRECAST FACTORY AT MESAIEED



HOLLOWCORE FINISHED PRODUCT



**CIVIL CONSTRUCTION**



**QATAR AIRWAYS – CREW ACCOMMODATION PROJECT**



**QATAR AIRWAYS – CREW ACCOMMODATION PROJECT**

## CIVIL CONSTRUCTION



UTILITY TUNNEL AT LUSAIL DEVELOPMENT PROJECT



SEWER TANKERS RECEIVING STATION



## PRECAST CONCRETE & HOLLOW CORE FACTORIES



ERECTION OF PRECAST ELEMENTS – LUSAIL DEVELOPMENT PROJECT



CENTRAL OUTFALL– LUSAIL



## PRECAST CONCRETE & HOLLOW CORE FACTORIES



HAMAD MEDICAL CITY/ ASIAN GAMES VILLAGE



CONSTRUCTION OF TYPE B HOUSES IN BARWA CITY – PHASE 1



## PRECAST CONCRETE & HOLLOW CORE FACTORIES



RAYYAN SHOPPING MALL



2100 – IKEA BOX PROJECT | ERECTION OF PRECAST ELEMENTS



## PRECAST CONCRETE & HOLLOW CORE FACTORIES



BANANA ISLAND VILLAGE & RESORT

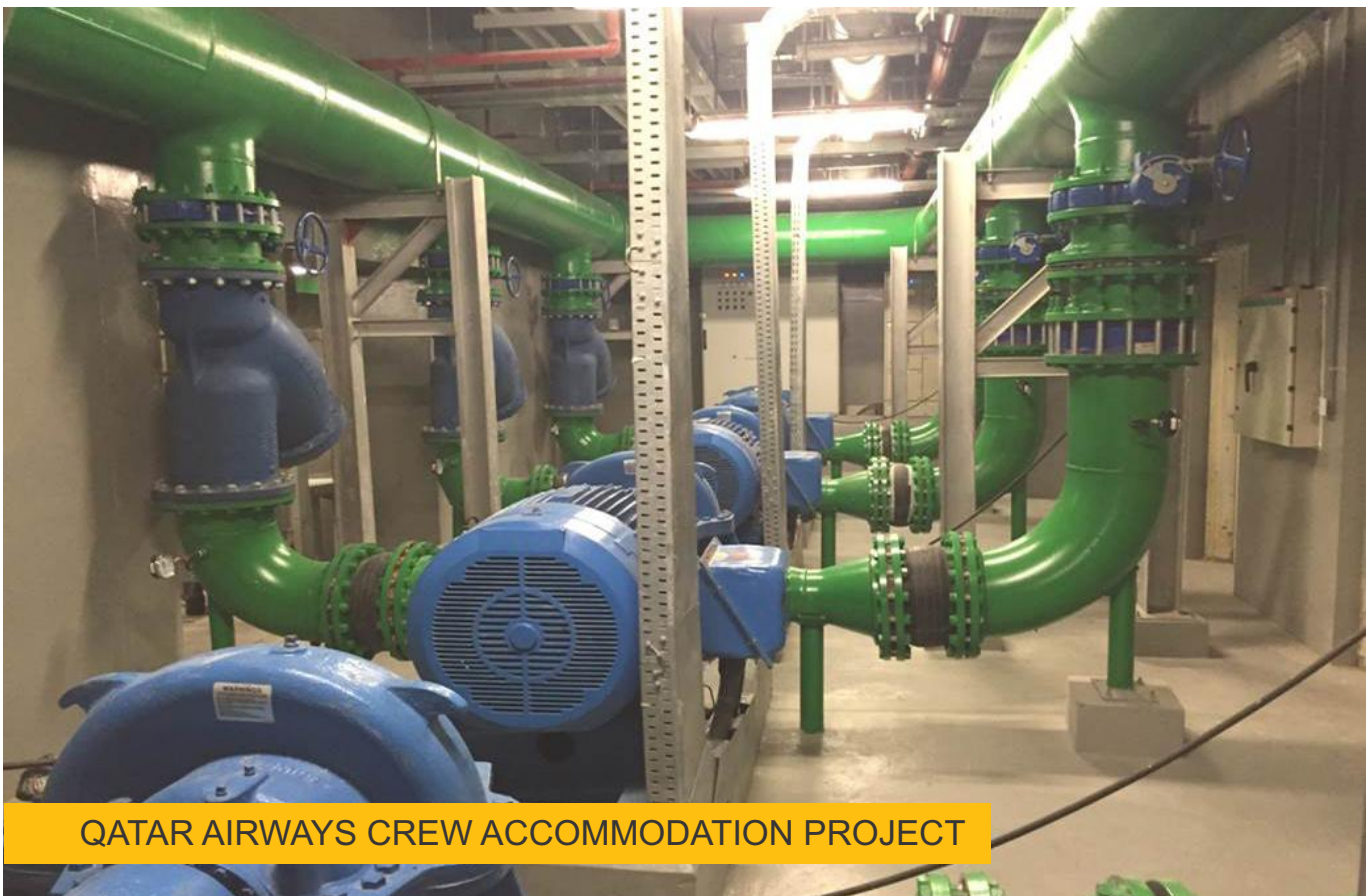
## MECHANICAL, ELECTRICAL AND PLUMBING WORKS



GREENLINE UNDERGROUND MEP WORKS



## MECHANICAL, ELECTRICAL AND PLUMBING WORKS





## MECHANICAL, ELECTRICAL AND PLUMBING WORKS



QATAR AIRWAYS CREW ACCOMMODATION PROJECT



QATAR AIRWAYS CREW ACCOMMODATION PROJECT



## MECHANICAL, ELECTRICAL AND PLUMBING WORKS



GREENLINE UNDERGROUND PROJECT



GREENLINE UNDERGROUND PROJECT



## MECHANICAL, ELECTRICAL AND PLUMBING WORKS



GREENLINE UNDERGROUND PROJECT



GREENLINE UNDERGROUND PROJECT



## MECHANICAL, ELECTRICAL AND PLUMBING WORKS



GREENLINE UNDERGROUND PROJECT



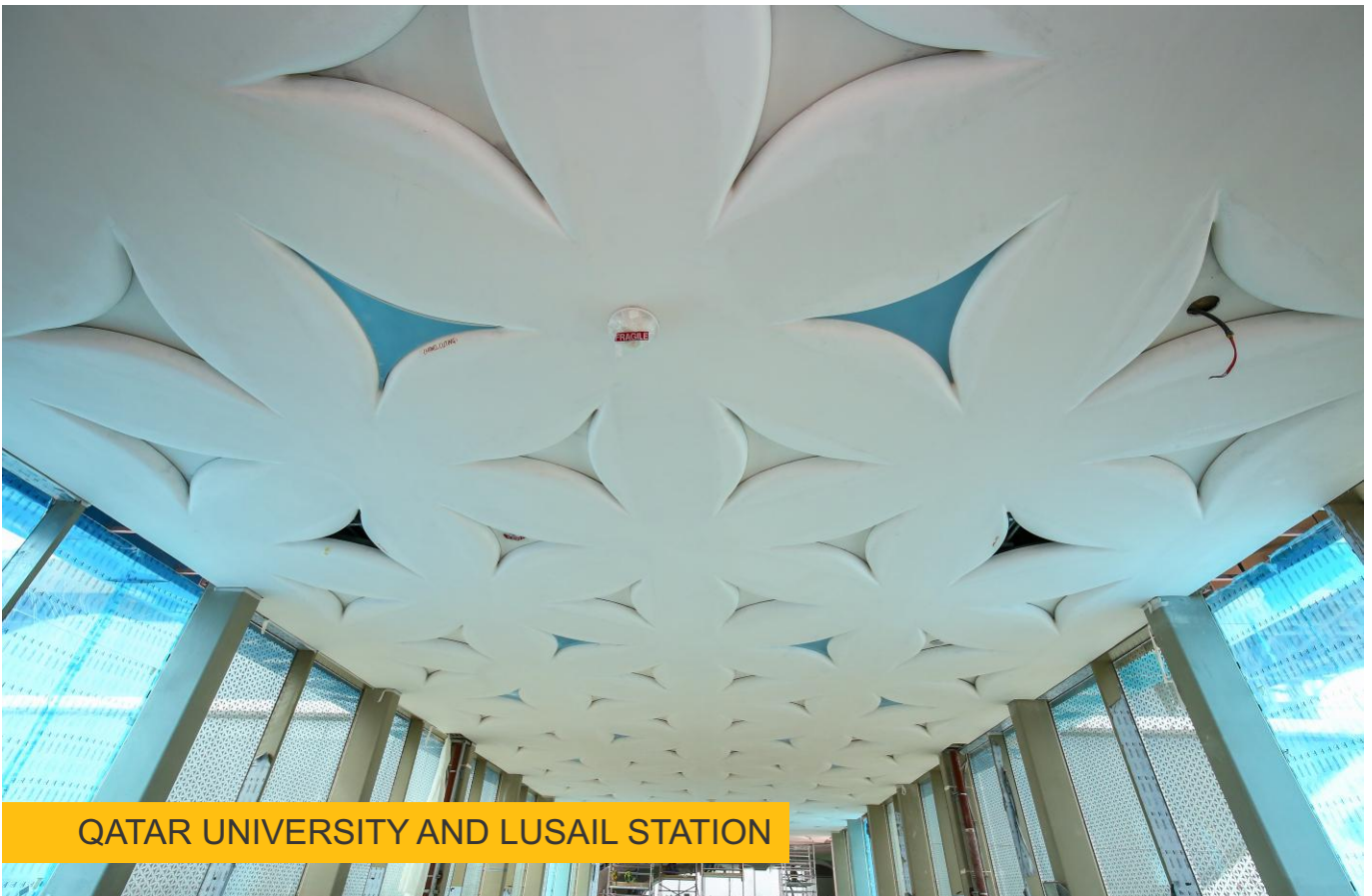
GREENLINE UNDERGROUND PROJECT



## ARCHITECTURAL FINISHES



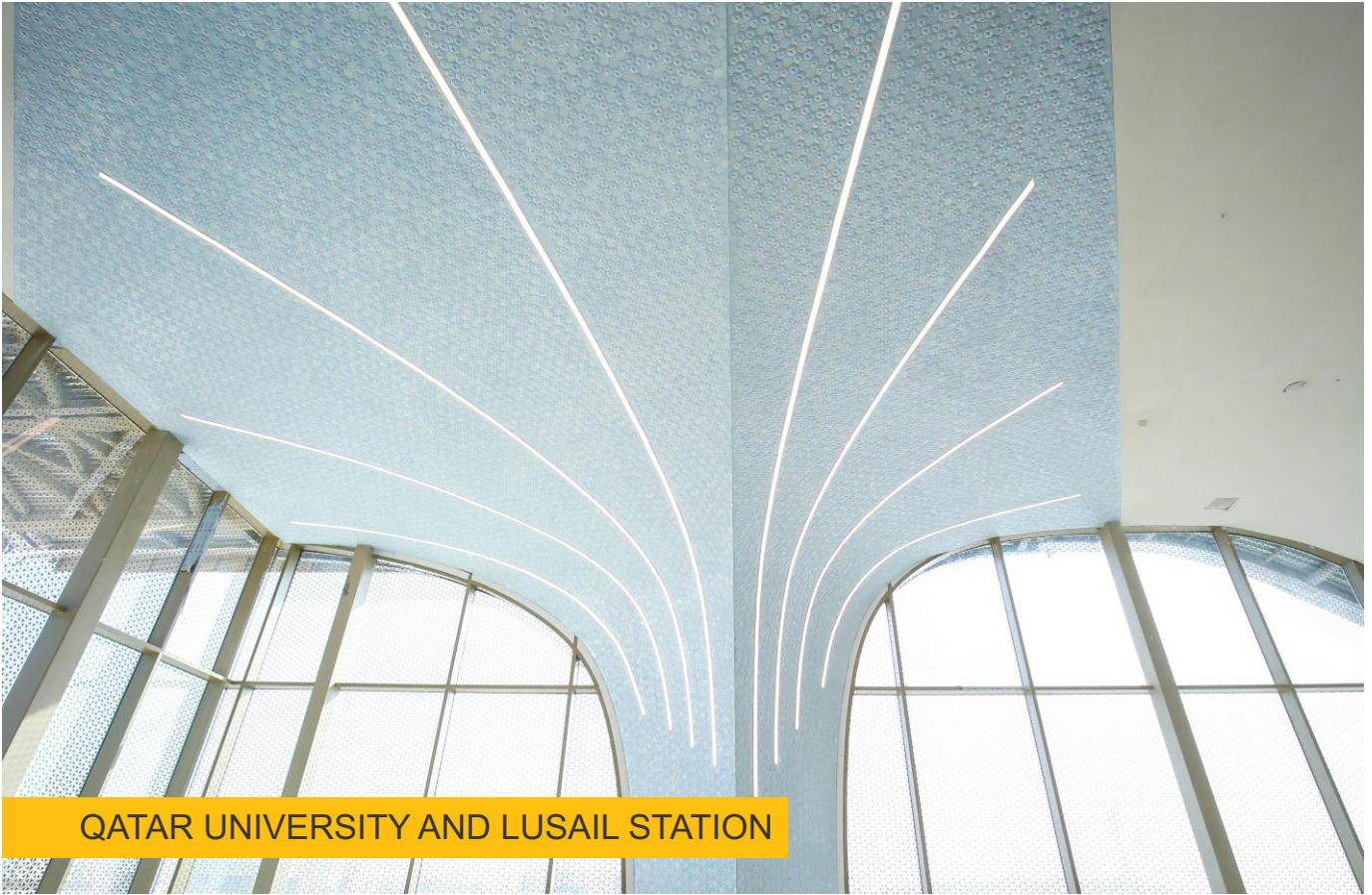
QATAR UNIVERSITY AND LUSAIL STATION



QATAR UNIVERSITY AND LUSAIL STATION



## ARCHITECTURAL FINISHES



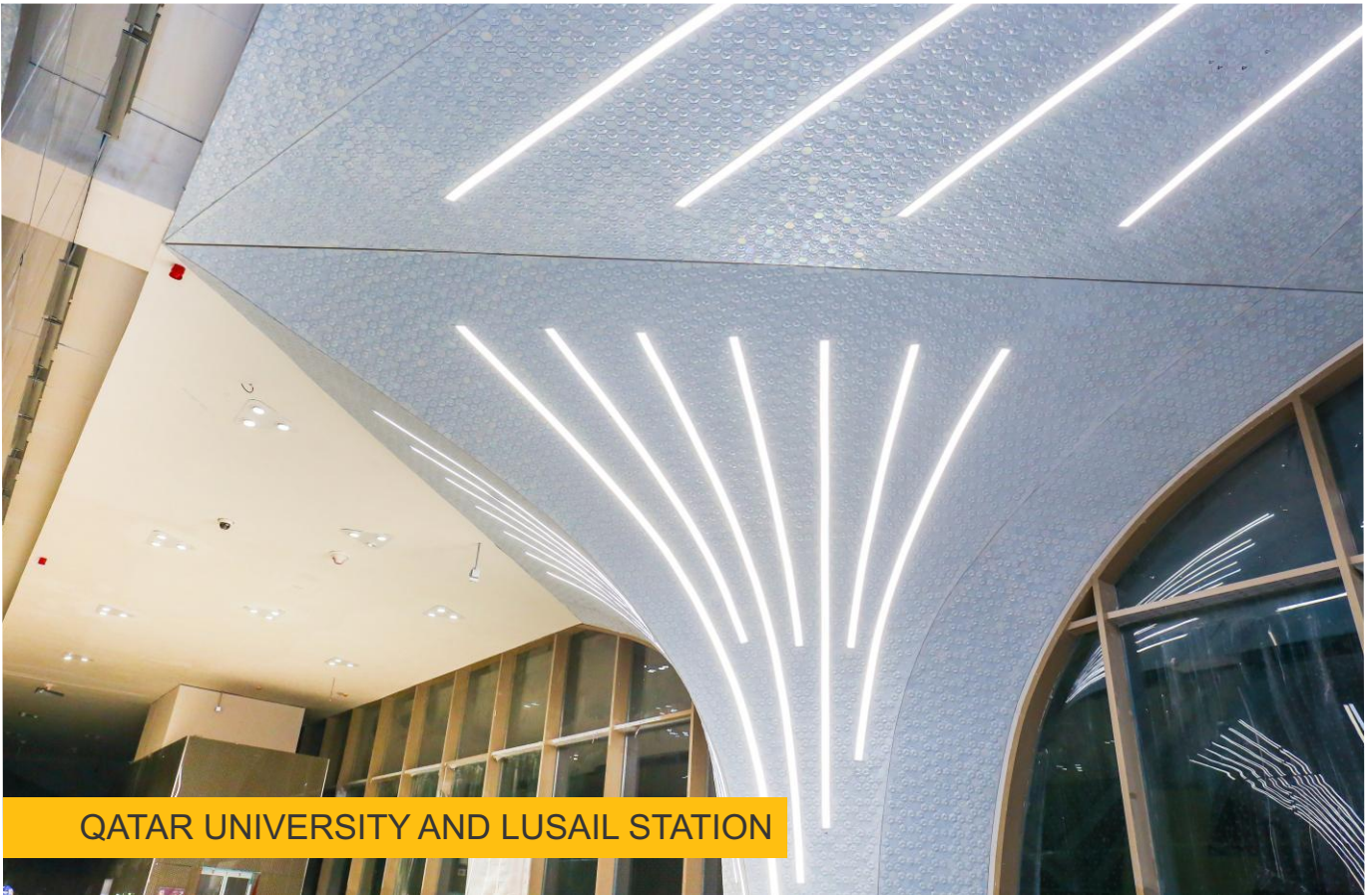
QATAR UNIVERSITY AND LUSAIL STATION



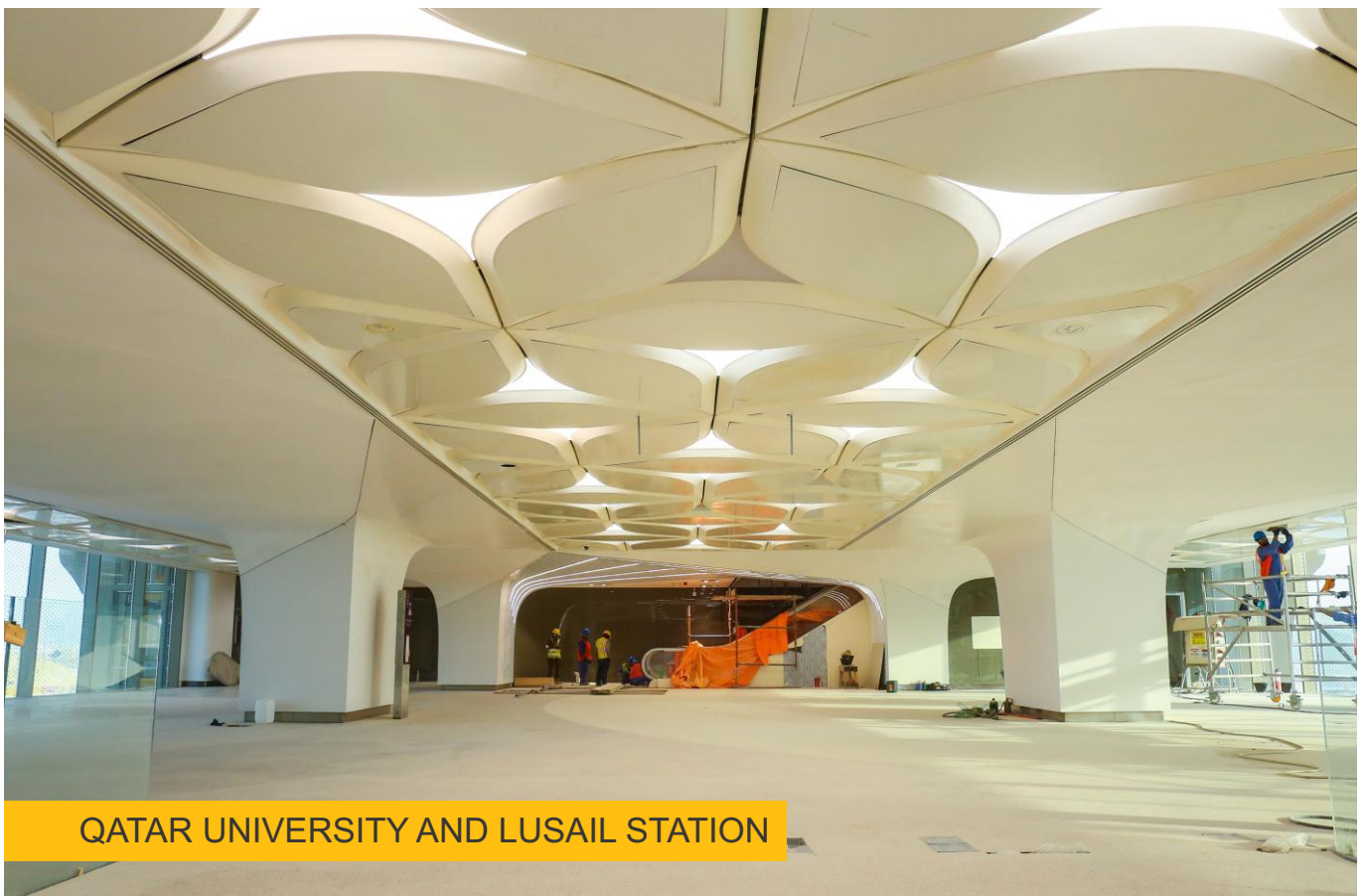
QATAR UNIVERSITY AND LUSAIL STATION



## ARCHITECTURAL FINISHES



QATAR UNIVERSITY AND LUSAIL STATION



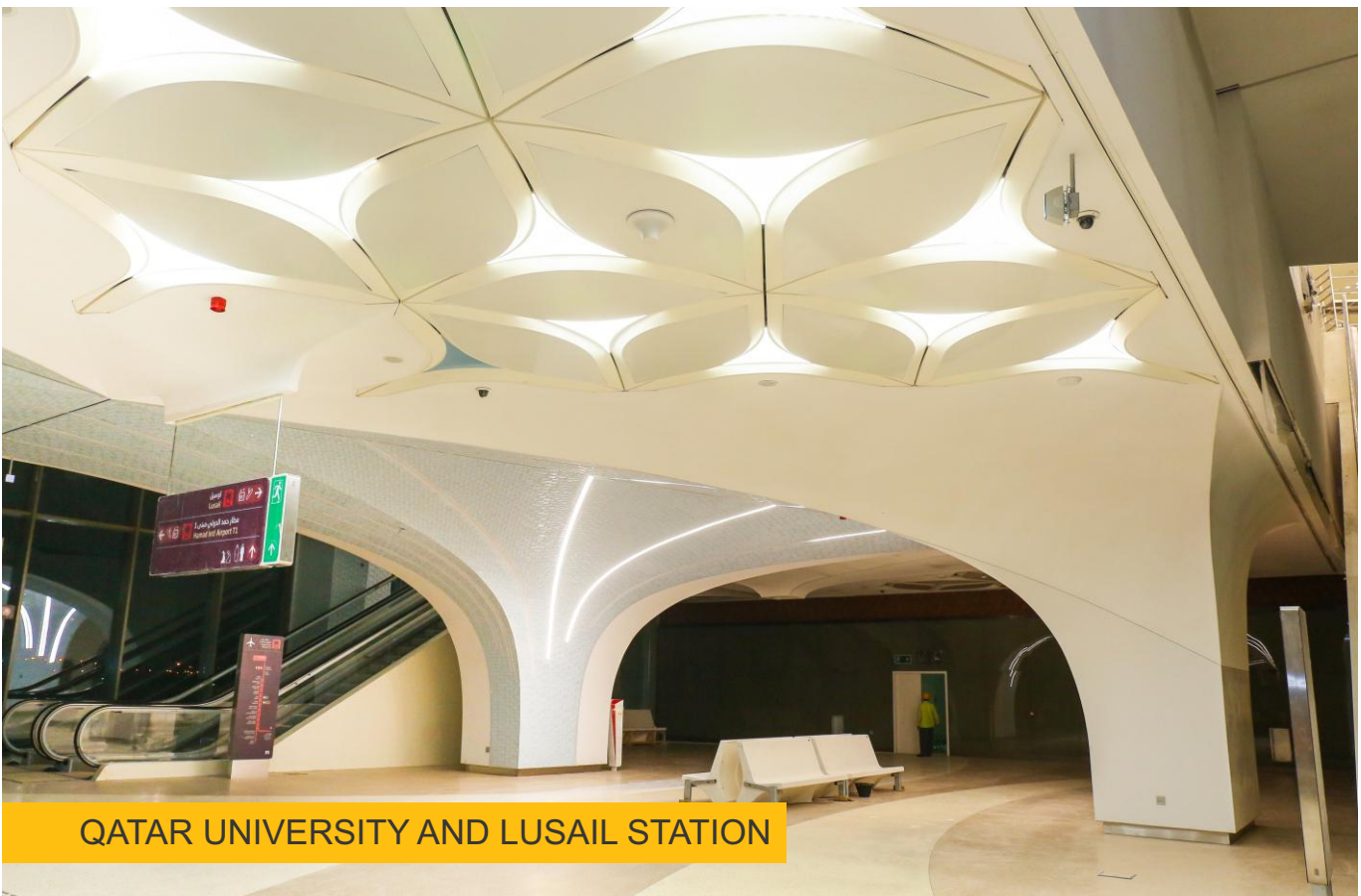
QATAR UNIVERSITY AND LUSAIL STATION



## ARCHITECTURAL FINISHES



QATAR UNIVERSITY AND LUSAIL STATION



QATAR UNIVERSITY AND LUSAIL STATION



## READYMIX CONCRETE PLANTS



READYMIX CONCRETE PLANT



FLEET OF TRANSIT MIXER



## STEEL CUT & BEND FACTORY



STEEL CUT AND BEND FACTORY



STEEL CUT AND BEND FACTORY



## EARTH WORK & BLASTING





## EARTH WORK & BLASTING



EXCAVATION, BLASTING AT RAWDA RASHID



NEW DOHA PORT PROJECT – EXCAVATION AND BLASTING



## OVERSEAS PROJECTS



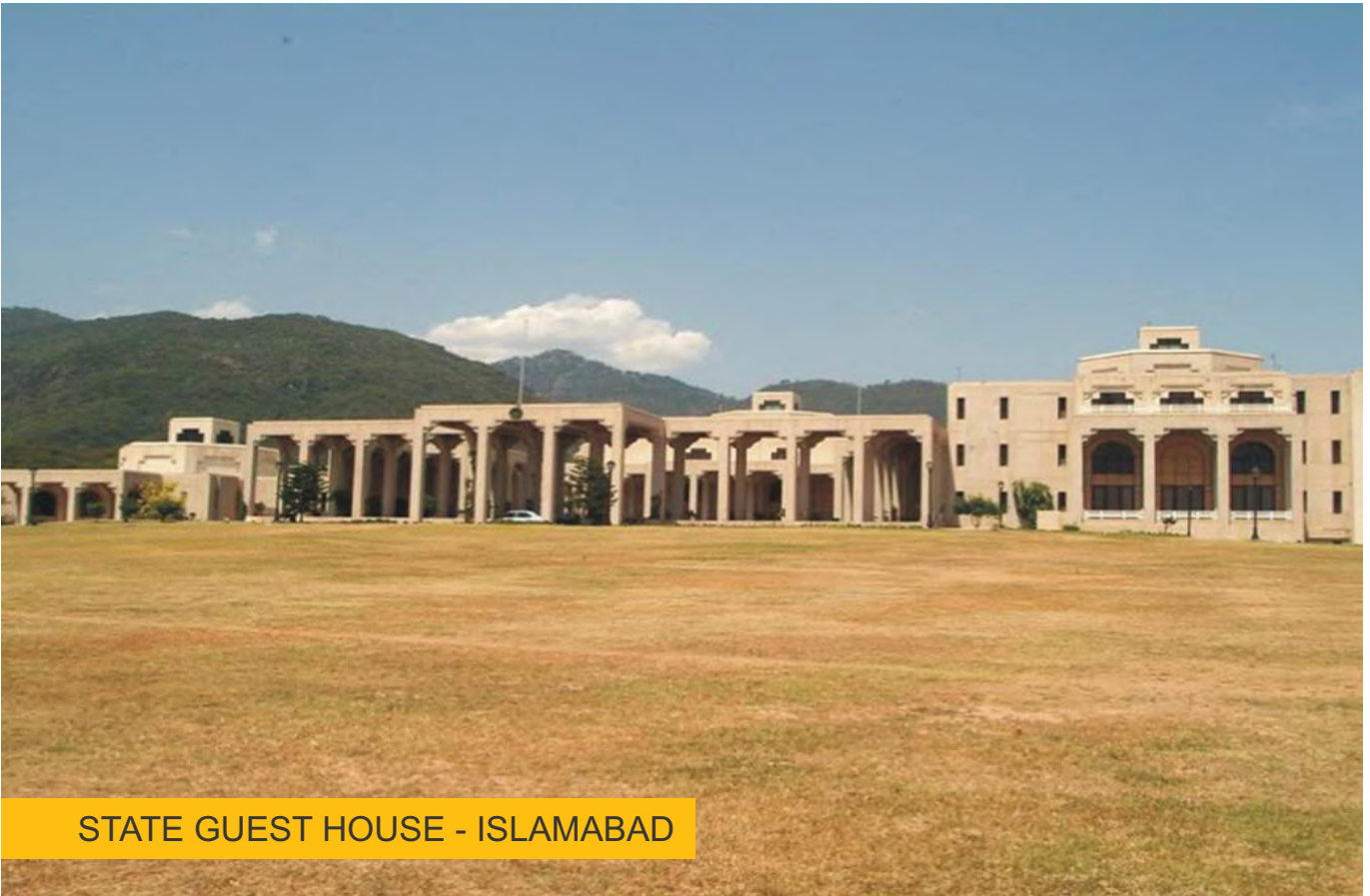
2 X 660 MW THERMAL POWER PLANT



REDCO PLAZA - ISLAMABAD



## OVERSEAS PROJECTS



STATE GUEST HOUSE - ISLAMABAD



CABLE CAR & CHAIR LIFT PATRIATA MUREE



## OVERSEAS PROJECTS



PRECAST PRE-STRESSED CONCRETE POLES PLANT - ISLAMABAD



HEAD OFFICE BUILDING OF WAPDA - ISLAMABAD



## OVERSEAS PROJECTS





**OVERSEAS PROJECTS**



**REDCO WEAVING & SPINNING MILLS**



**REDCO WEAVING & SPINNING MILLS**



**OVERSEAS PROJECTS**

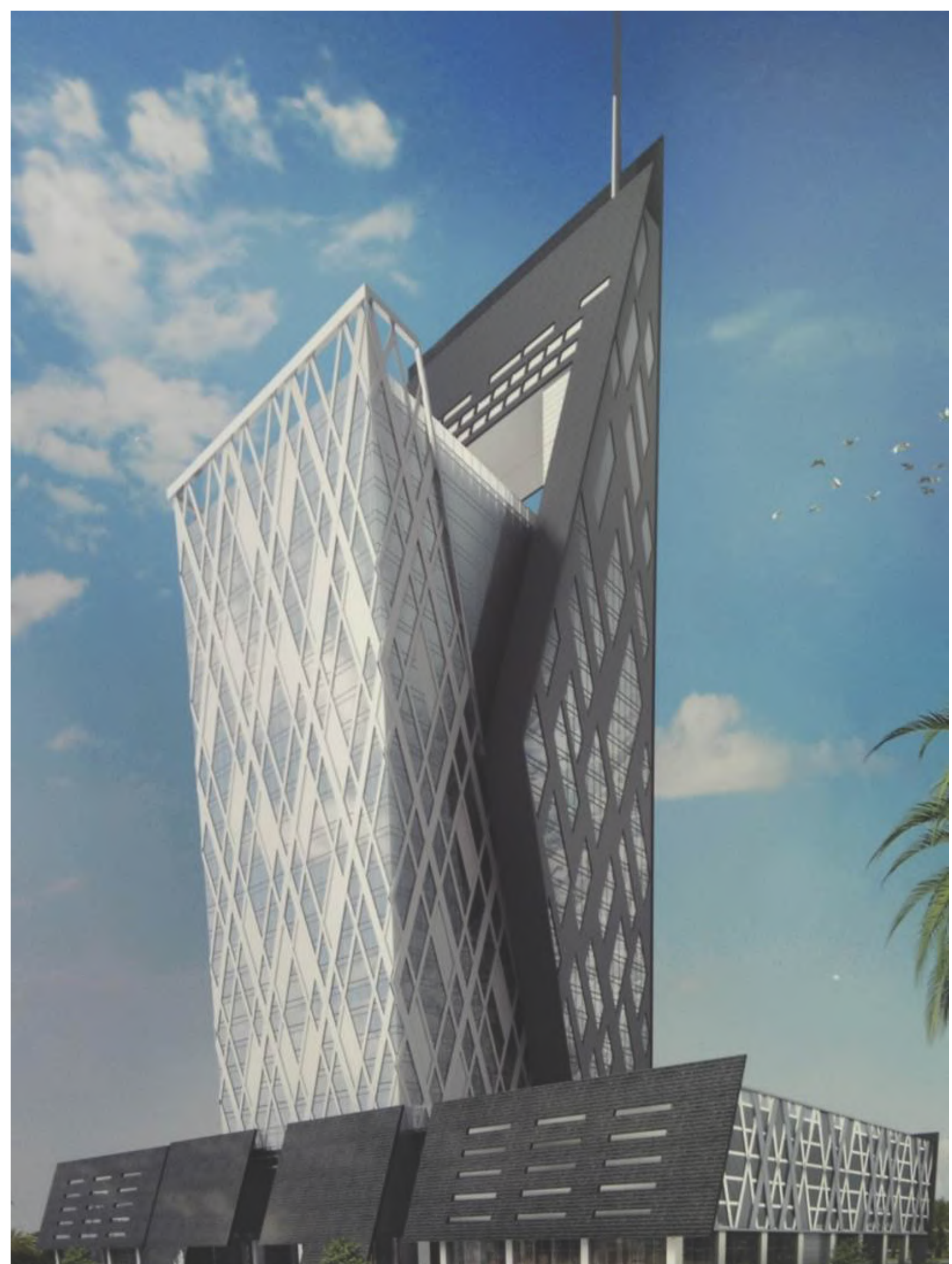


**POST TENSIONED BRIDGE – MOTOR WAY PAKISTAN**



**POST TENSIONED BRIDGE – MOTOR WAY PAKISTAN**





P.O. Box: 16750, Doha – Qatar | Tel: 44415426 | Fax: 44413786  
email: [redcoqatar@gmail.com](mailto:redcoqatar@gmail.com) | [www.redcointl.com](http://www.redcointl.com)